

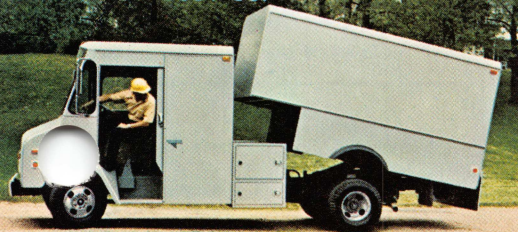
# CHEVY

## FORWARD CONTROL CHASSIS



STEP-VAN BY UNION CITY

J.B.E. OLSON BODY CO.



'77 CHEVY TRUCKS.  
BUILT TO STAY TOUGH.

BOYERTOWN AUTO BODY WORKS



AVAN BY AIRSTREAM





P20 STEP-VAN KING 12' STEEL

# STEP-VAN KING: CHOICE OF STEEL OR ALUMINUM 10, 12 OR 14 FT. BODIES. CAPACITIES UP TO 717 CU. FT.

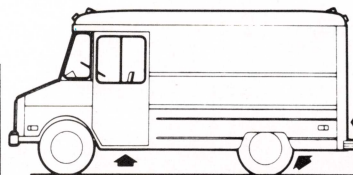
**Wide selection of body styles and capacities available.** Chevy's Step-Van King comes on wheelbases of 125, 133 and 157 inches with cargo capacities all the way up to 579 cu. ft. in steel bodies, up to 717 cu. ft. in aluminum bodies. With GVWRs in two series ranging from 6,800 to 14,000 lbs., maximum payload is 7,615 lbs. for steel models and 8,235 lbs. for aluminum models. Body lengths from 10 to 14½ feet are available, with inside heights from 72 to 76 inches (80" on aluminum body). Body width additions of 9 to 13 inches available for aluminum models.

**Solid, sturdy steel body construction.** Heavy-gauge panels are welded to the steel framework. Thick insulation separates inner and outer

roof, side and rear paneling. Slip-resistant tread plate provided behind driver's seat on all models and in step wells on aluminum models.

**Six or V8 power.** Standard engine is the dependable 292 Six. The 350-4 is available on Series 20 and 30, while a big-block 454-4 V8 is available for 30 models.

**High Energy Ignition system.** Standard with both Six and V8 engines, it delivers up to an 85% hotter spark than conventional systems. Our High Energy Ignition improves cold-weather starting and provides all-weather protection from moisture, dirt and road splash. Solid-state design eliminates ignition points and condenser, extends time between recommended tune-ups.



**Extensive rust protection in steel models.** Protective liners inside the front fenders act as self-washing shields to help protect against rust-causing mud and slush. Front step wells and rear wheel housings are corrosion-resistant galvanized steel. Rear door hinge assemblies are zinc-coated. All welded joints are sealed. Body panels are thoroughly cleaned, primed, then given a high-quality enamel finish. The entire underbody is undercoated for added protection.

**Many standard features.** Sliding side doors are standard. So is front-opening hood, new foam-padded adjustable driver's seat, insulated interior (roof only on aluminum bodies), power front disc/rear drum brakes, speedometer calibrated in kilometers as well as miles, constant reading voltmeter and oil pressure gauge and much more.

**Massive Girder Beam front suspension.** It's built to help give driver, truck and cargo an easy ride. Massive Girder Beam suspension has a pair of steel control arms at either end. Each pair flexes up and down separately, allowing front wheels to step independently over the rough spots and helping to smooth the ride.

## STEP-VAN KING (STEEL) SELECTOR

Series	Wheel-base (in)	Overall Length (in)	Length (in)	Load Space Width (in)	Height (in)	Capacity (cu ft)	Payload Range (lb)
CP208 CP308	125	220.6	*122	*77.5	*72	*375	P20 1310-2535 P30 1905-575
			*122	*77.5	76	397	
			128	*77.5	*72	394	
			128	*77.5	76	417	
CP210 CP310	133	244.6	*146	*77.5	*72	*451	P20 1070-2295 P30 1815-7405
			*146	*77.5	76	477	
			152	*77.5	*72	471	
			152	*77.5	76	498	
CP314	157	268.6	*170	*77.5	*72	*528	P30 1345-7085
			*170	*77.5	76	558	
			176	*77.5	*72	547	
			176	*77.5	76	579	

\*Standard

**Load-matched brake system.** Brake systems are computer-matched to the gross vehicle weight of the chassis you order. Bigger trucks get bigger brake components. Front disc brake advantages include improved fade resistance, improved water-recovery characteristics, high deceleration rates under severe operating conditions, responsiveness, easy servicing. Rear drum brakes are finned for cooling. Power assist is standard on all models. New 4-wheel disc brakes available for Series 30 models with 12-14,000-lb. GVWR.

**As much as 717 cu. ft. in aluminum Kings.** The load platform of an aluminum Step-Van King is big, up to 111.6 sq. ft., including the flat-topped wheelhousings. Space to haul from 380 to 717 cu. ft. of cargo. Two model series with GVWRs from 6,800 to 14,000 lbs. are available. Bodies range from 10 to 14½ feet long with interior heights of 72, 76 and 80 inches, interior widths of 77.5, 86.4 and 90.5 inches.

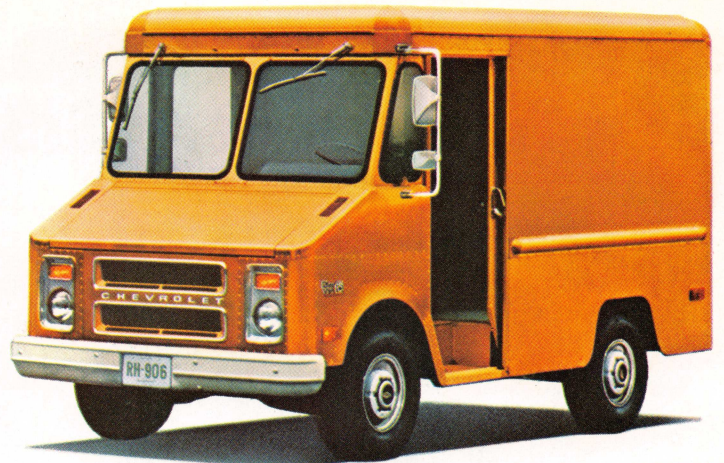
**Wide sliding door.** Nearly three feet wide, side doors glide open on smooth-running nylon bushings.



**Front-opening hood for easy maintenance.** Just lift the hood for routine engine service and maintenance. For engine access, hinged cover inside vehicle can be raised or completely removed.

**Lightweight, tough aluminum construction.** Heavy-gauge aluminum paneling is riveted to a rigid aluminum body framework. Embossed aluminum interior headlining has one inch of insulation underneath. Slip-resistant tread plate behind driver's seat and in step wells.

**Up to 886-pound weight savings.** Every pound of vehicle weight saved by using aluminum means another pound of potential payload capacity. And potentially more profit on every run. This added capacity, together with reduced maintenance for aluminum bodies, helps promote load-carrying efficiency.



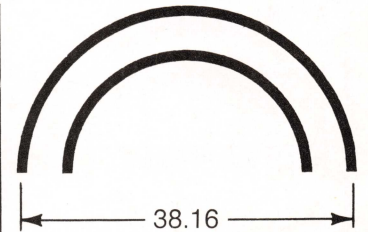
P10 STEP-VAN 8' ALUMINUM

# P10 STEP-VAN: IN 7 OR 8 FT. STEEL BODIES OR 8 FT. ALUMINUM BODIES

**Traditional, sturdy Step-Van construction.** You can order this trim, space-saving van in either steel or aluminum and get the same kind of toughness that's standard on Step-Van Kings: strong steel frame, sturdy steel bumpers, built-in rub rails and more. Front-end configuration provides good engine accessibility, close-up visibility for the driver. Front-opening hood allows easy maintenance.

**Standard 292 Six.** A fine balance of performance and efficiency, the 292 Six is standard on Step-Van 7. It gives you the performance you need to make the most of Step-Van 7 capacity, along with the efficient operation of a Six. Uses no-lead or regular fuel.

**Double rear doors.** Standard panel-type doors are 38" wide. Wider hinged doors and a special order overhead rear door are available.



**102" wheelbase for maneuverability.** Step-Van 7's short wheelbase permits the kind of maneuverability you usually associate only with a mini-van. (Turning circle is just 38.16 ft., curb to curb.) Other quality features: power-assisted front disc/rear drum brakes, sliding side doors, rear door glass, new foam-padded driver's seat, extensive rustproofing on steel models. Up to 258 cu. ft. of usable load space. Payloads up to 2,305 lbs.



P30 STEP-VAN KING 12' ALUMINUM

## STEP-VAN KING (ALUMINUM) SELECTOR

Series	Wheel-base (in)	Overall Length (in)	Load Space			Capacity (cu ft)•	Payload Range (lb)
			Length (in)	Width (in)•	Height (in)•		
CP208 CP308	125	220.8	*123.5	*77.5	*72	*380	P20 1900-3035 P30 2495-8235
			*123.5	*77.5	76	401	
			129.5	*77.5	*72	399	
			129.5	*77.5	76	422	
CP210 CP310	133	244.8	*147.5	*77.5	*72	*458	P20 1790-2925 P30 2385-8120
			*147.5	*77.5	76	483	
			153.5	*77.5	*72	477	
			153.5	*77.5	76	503	
CP314	157	268.8	*171.5	*77.5	*72	*535	P30 2230-7970
			*171.5	*77.5	76	565	
			177.5	*77.5	*72	555	
			177.5	*77.5	76	585	

\*Standard.

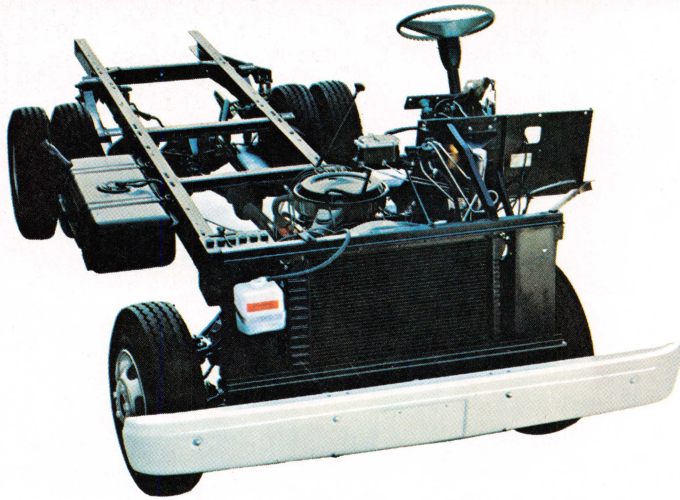
•In addition to the optional length extensions and optional height additions included in the above chart, there are 2 increased-width options available (9" and 13") plus another height addition (80" overall inside height) which will increase cubic capacity accordingly.

## STEP-VAN 7 (STEEL OR ALUMINUM)

Series	Wheel-base (in)	Overall Length (in)	Length (in)	Load Space		Height (in)	Capacity (cu ft)	Payload (lb)	
				Width (in)	†			Steel	Alum.
CP105	102	*175 *†187	*86 *†98	*70 *†70	*69 *†69	*228 *†258	1900	2305	

\*Steel body. †Aluminum body.

# CHEVY FORWARD CONTROL CHASSIS



**Chevy forward control chassis adapt** to a wide variety of special van bodies. The base engine is a 292 Six. A 350-4 V8 is available for Series 20-30 models, and a 454-4 V8 is available for Series 30 models. (Motor Home chassis have a 350 or 454 V8 standard, depending on GVWR, with the 454 V8 available for models with the standard 350 V8.) Heavy ladder-type frame with deep-channel side rails. Massive Girder Beam independent front suspension. Leaf spring rear suspension. Two manual transmissions and Turbo Hydra-matic available. Brake system computer-matched to gross vehicle weight, including new 4-wheel disc brakes for Series 30 models with a 12-14,000-lb. GVWR.

**Special van bodies** for the Chevrolet Forward Control Chassis are designed and built by several manufacturers. These special bodies give you an even wider selection with all the benefits of Chevrolet chassis quality. A partial listing of body manufacturers includes: J. B. E. Olson Corp., Garden City, N.Y.; Boyertown Auto Body Works, Boyertown, Pa.; Union City Body Co., Inc., Union City, Ind.; Penn Versatile Van, Chicago, Ill.; Airstream Inc., Jackson Center, Ohio.



## SPECIFICATIONS

SERIES	P10		P20		P30	
GVW RANGE (lb)	6200		6800 to 8000		7600 to 14,000	
AVAILABILITY	Standard	Available	Standard	Available	Standard	Available
ENGINE	Six 292-1	—	292-1	—	292.1	—
	V8	—	—	350-4	—	350-4, 454-4
CLUTCH DIA. (in)	11	—	11	12	11	12
FRONT SUSPENSION	Independent—Coil Springs					
Type	Independent—Coil Springs					
Capacity (lb)	3100	—	3700	—	4000	—
Spring Capacity (lb)	1550	—	1800	—	2200	—
Shock Absorbers	1.0" dia	1.38" dia	1.0" dia	1.38" dia	1.0" dia	1.38" dia
Stabilizer Bar	1.06" dia	—	1.06" dia	1.25" dia	1.06" dia	1.25" dia
REAR SUSPENSION	Semi-Floating		Full-Floating			
Axle Type	Semi-Floating		Full-Floating			
Capacity (lb)	3750	—	5700	—	7900	11,000
Ratios	3.73	4.11	4.56	4.10	4.56	4.10, 5.13, 5.43, 6.17
Springs—Type	Two-Stage Multi-Leaf					
Spring Capacity (lb)	2200	—	2200	2850	3100	4000, 5900
Shock Absorbers	1.0" dia	1.38" dia	1.0" dia	1.38" dia	1.0" dia	1.38" dia
Stabilizer Bar	—		—		1.06" dia	—
BRAKES	Power—Disc/Drum		Power—Disc/Drum		Power—Drum/Disc@	
FRONT/REAR	Power—Disc/Drum		Power—Disc/Drum		Power—Drum/Disc@	
ELECTRICAL	Battery (watts)		Battery (watts)		Battery (watts)	
BATTERY	3200		3200		3200	
GENERATOR	42		42		42	
FUEL TANK	Nominal Capacity (gal)		Nominal Capacity (gal)		Nominal Capacity (gal)	
NOMINAL CAPACITY	21		30#		30#	
STEERING	Manual		Manual		Manual	
TYPE	Manual		Manual		Manual	
TRANSMISSION	3-Spd		3-Spd		3-Spd	
MANUAL	3-Spd		3-Spd		3-Spd	
AUTOMATIC	—		—		—	
TIRE SIZE, TUBELESS	L78-15B		8.75-16.5C		8.75-16.5C-Fr. 8.75-16.5D-Rr.	
	Larger Size Tubeless and Tube-type Tires Available					

@ 4-wheel disc brakes are included on models with 11,000-lb. rear axle and 12-14,000 GVW Rating.  
#24 gal for Calif.

Tire load range—B(4PR), C(6PR), D(8PR).

ENGINE SPECIFICATIONS	ENGINES WITH HEAVY-DUTY EMISSIONS FOR MODELS OF 6001-LB GVW AND ABOVE		
	292 1-bbl L6	350 4-bbl V8	454 4-bbl V8
DISPLACEMENT (cu in)	292	350	454
BORE & STROKE (in)	3.9 x 4.1	4.0 x 3.5	4.3 x 4.0
COMPRESSION RATIO	8.0 to 1	8.5 to 1	8.15 to 1
SAE NET HORSEPOWER @ rpm	120 @ 3600	165 @ 3800	†240 @ 3800
SAE NET TORQUE (lb-ft) @ rpm	215 @ 2000	255 @ 2800	†370 @ 2800

†For California only: Net Horsepower—250 @ 3800 rpm. Net Torque, lb.-ft.—385 @ 2800 rpm. Ratings not determined for '77.

MANY VEHICLES IN THIS CATALOG ARE SHOWN WITH AVAILABLE FACTORY-INSTALLED OPTIONS, DEALER ACCESSORIES AND SPECIAL EQUIPMENT FROM VARIOUS INDEPENDENT SUPPLIERS.

All illustrations and specifications contained in this literature are based on the latest product information available at the time of publication approval. The right is reserved to make changes at any time in prices, colors, materials, equipment, specifications and models, and also to discontinue models. CHEVROLET MOTOR DIVISION OF GENERAL MOTORS CORPORATION, DETROIT, MICHIGAN 48202. LITHO IN U.S.A.